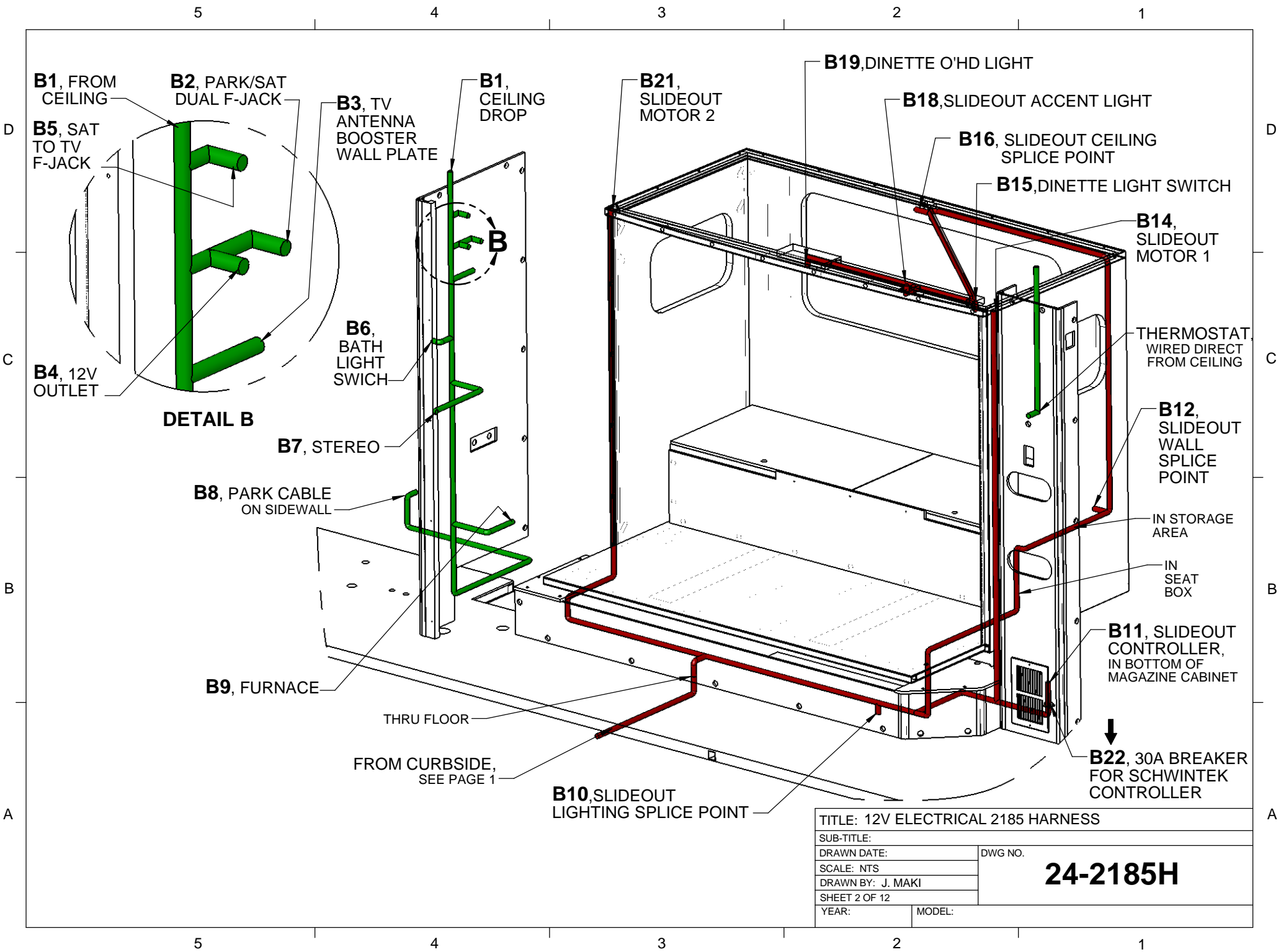


| REV | DATE | BY | REVISION DESCRIPTION | ECO# |
|-----|----------|----|--|--------------|
| J | 06/12/15 | EE | ADD THE EA209 PER MANUFACTURER'S SPECIFICATIONS PER (ECR 2015-303) | ECO 2015-066 |
| H | 02/27/15 | EE | UPDATE THE SPEAKER WIRES TO MATCH STEREO WIRING PER (ECR 2015-221) | ECO 2015-048 |
| G | 08/18/14 | SS | 2015 FEATURE CHANGE PRINT RELEASE | ECO 2015-024 |
| F | 01/10/14 | SS | UPDATE WIRE GAGES & COLORS TO CURRENT STANDARDS PER ECR 2014-134 | ECO 2014-033 |
| E | 11/01/13 | SS | ADD JUMPER WIRE & CONNECTOR FOR BREAKAWAY SWITCH PER ECR 2014-094 | ECO 2014-023 |

Lance
CAMPER MANUFACTURING CORP.
43120 VENTURE STREET
LANCASTER, CA, 93535

| | | |
|------------------------------------|----------|--|
| TITLE: 12V ELECTRICAL 2185 HARNESS | | |
| SUB-TITLE: | | |
| DRAWN DATE: | DWG NO. | |
| SCALE: NTS | 24-2185H | |
| DRAWN BY: J. MAKI | | |
| SHEET 1 OF 12 | | |
| YEAR: | MODEL: | |



| | |
|------------------------------------|---------|
| TITLE: 12V ELECTRICAL 2185 HARNESS | |
| SUB-TITLE: | |
| DRAWN DATE: | DWG NO. |
| SCALE: NTS | |
| DRAWN BY: J. MAKI | |
| SHEET 2 OF 12 | |
| YEAR: | MODEL: |

24-2185H

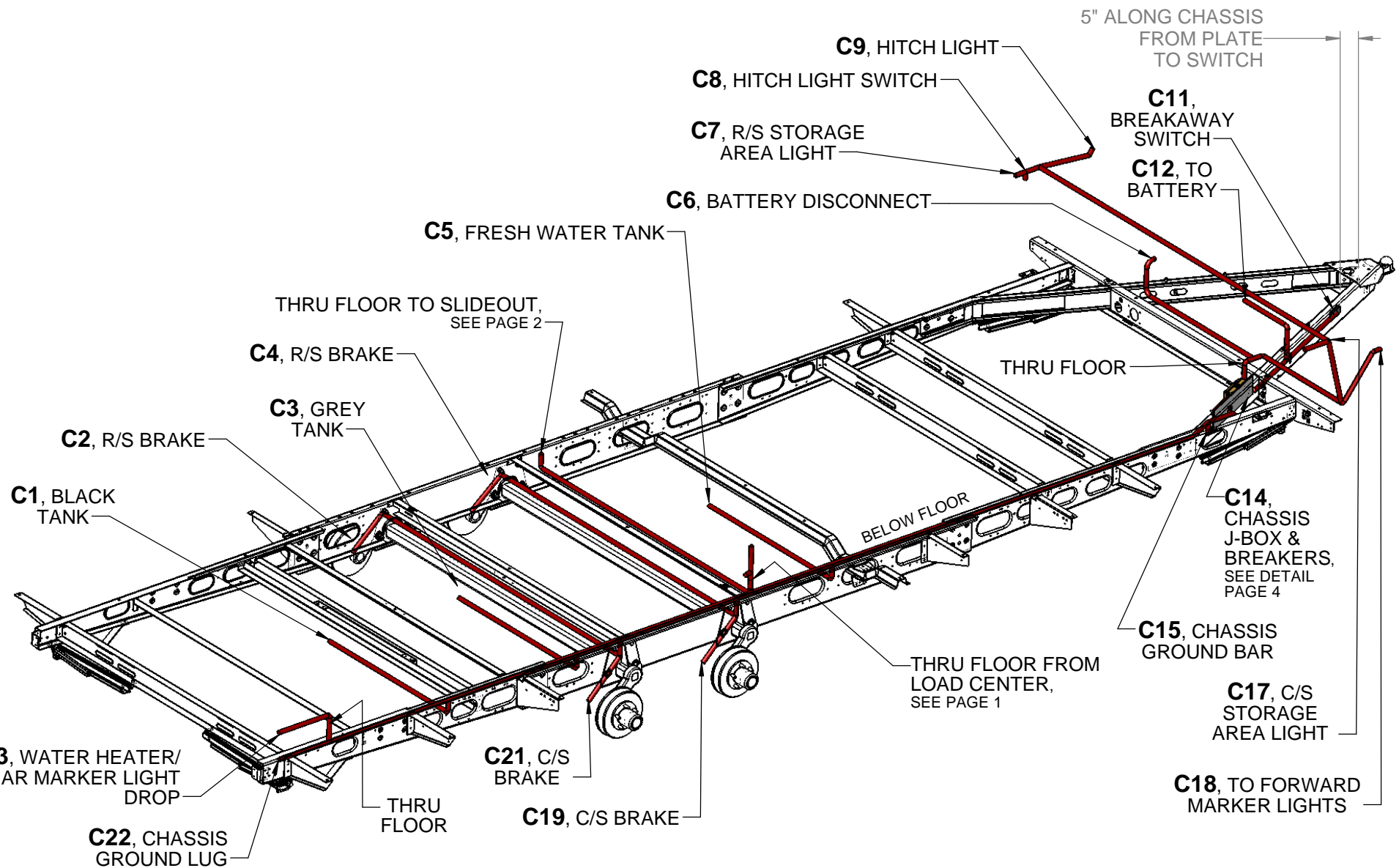
5

4

3

2

1



TITLE: 12V ELECTRICAL 2185 HARNESS

SUB-TITLE:

DRAWN DATE:

DWG NO.

SCALE: NTS

DRAWN BY: J. MAKI

SHEET 3 OF 12

YEAR:

MODEL:

24-2185H

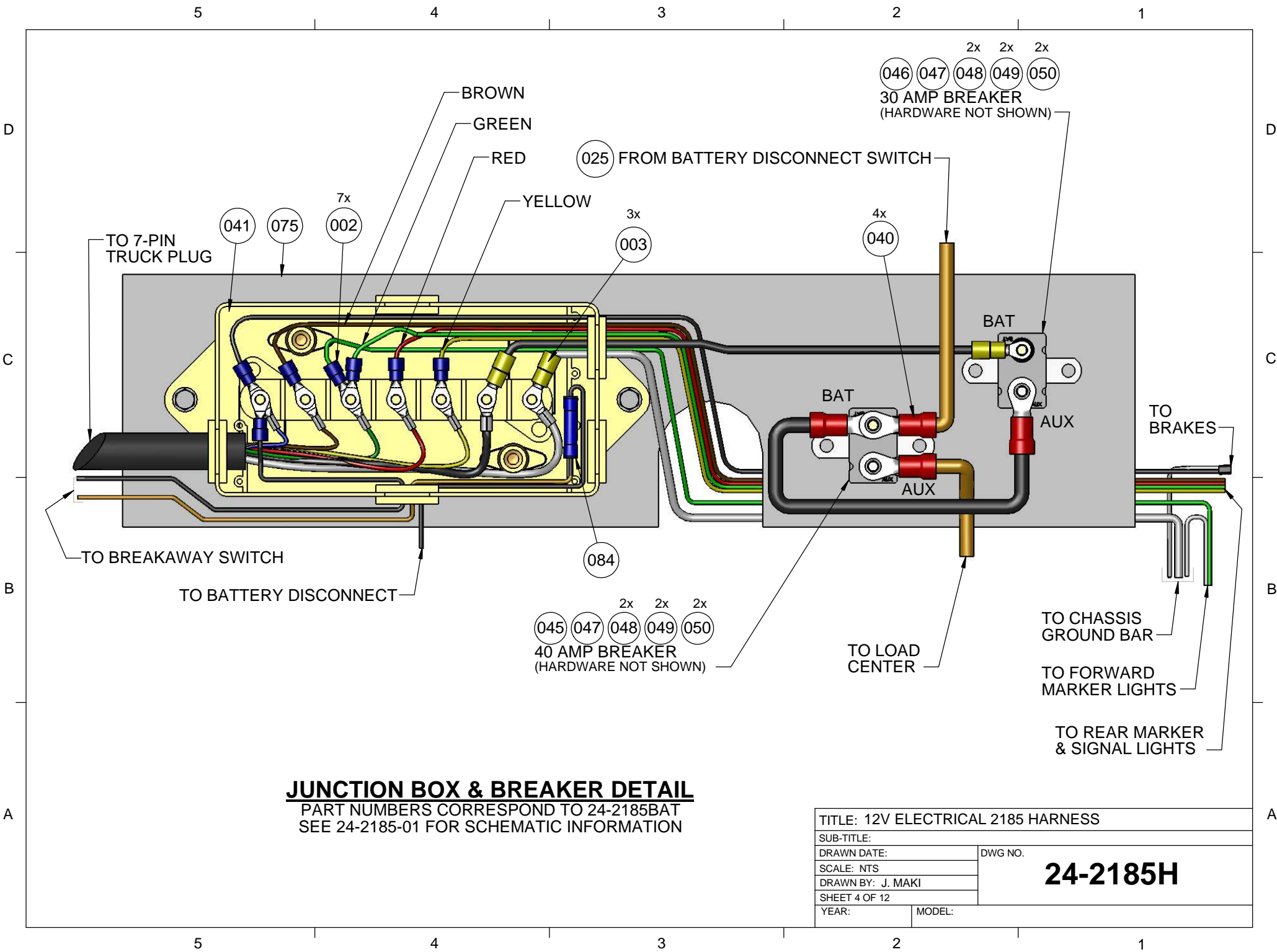
5

4

3

2

1



JUNCTION BOX & BREAKER DETAIL
PART NUMBERS CORRESPOND TO 24-2185BAT
SEE 24-2185-01 FOR SCHEMATIC INFORMATION

| | |
|------------------------------------|-----------------|
| TITLE: 12V ELECTRICAL 2185 HARNESS | |
| SUB-TITLE: | |
| DRAWN DATE: | DWG NO. |
| SCALE: NTS | 24-2185H |
| DRAWN BY: J. MAKI | |
| SHEET 4 OF 12 | |
| YEAR: | |
| MODEL: | |

5

4

3

2

1

**D2, ROADSIDE BEDSIDE
CABINET DROP, FROM
CEILING THRU FRONT WALL**

**D1, CURBSIDE BEDSIDE
CABINET DROP, FROM
CEILING THRU FRONT WALL**

**D6, CENTER
BEDROOM
ACCENT LIGHT**

**D7, CURBSIDE
READING LIGHT**

**D5, ROADSIDE
READING LIGHT**

**D3,
12V/USB
RECEP**

**D4, R/S
BEDROOM
ACCENT LIGHT**

**D9, BEDROOM
ACCENT LIGHT
SWITCH**

**D8, C/S BEDROOM
ACCENT LIGHT**

TITLE: 12V ELECTRICAL 2185 HARNESS

SUB-TITLE:

DRAWN DATE:

SCALE: NTS

DRAWN BY: J. MAKI

SHEET 5 OF 12

YEAR:

DWG NO.

24-2185H

MODEL:

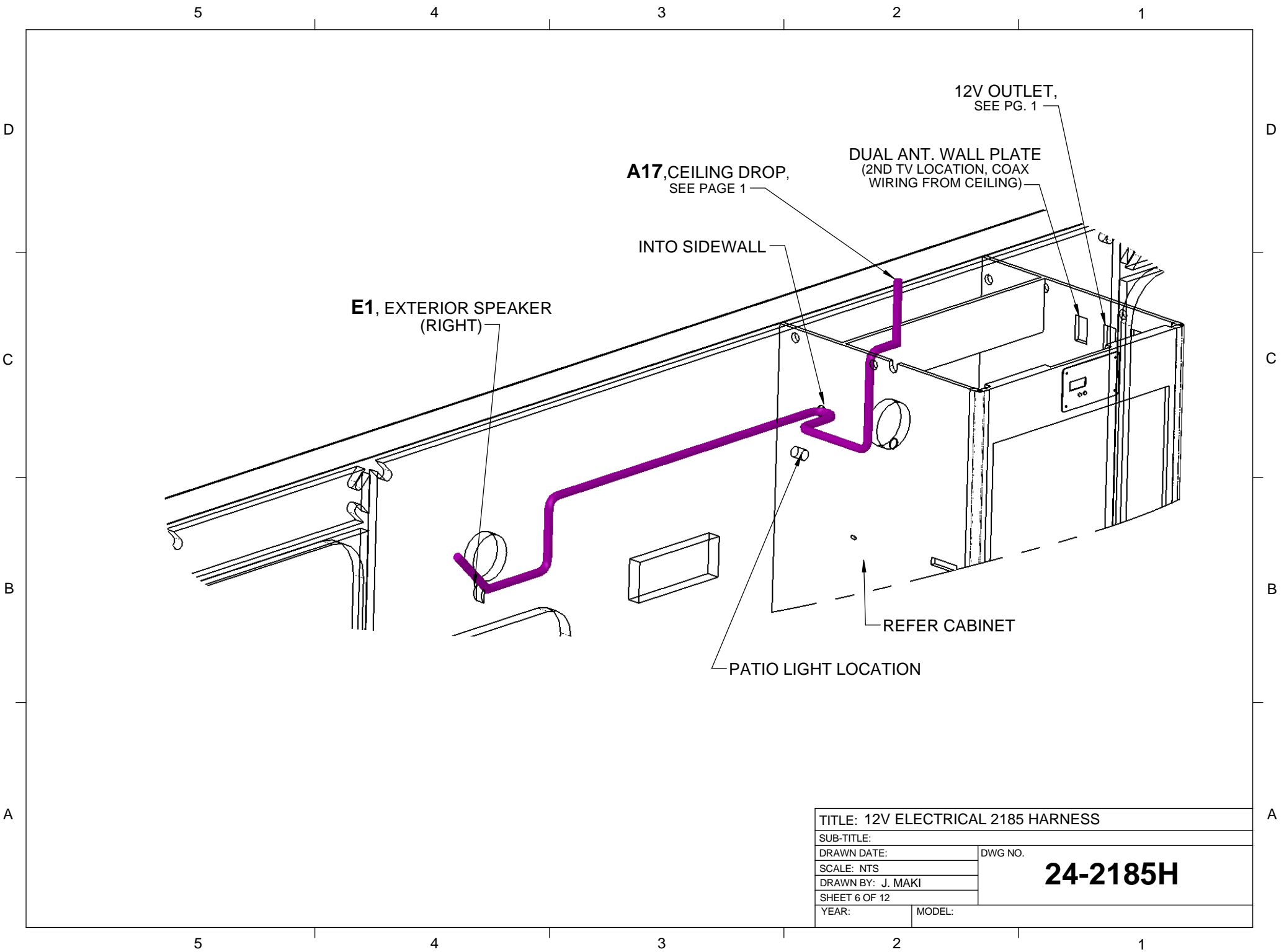
5

4

3

2

1



D

C

B

A

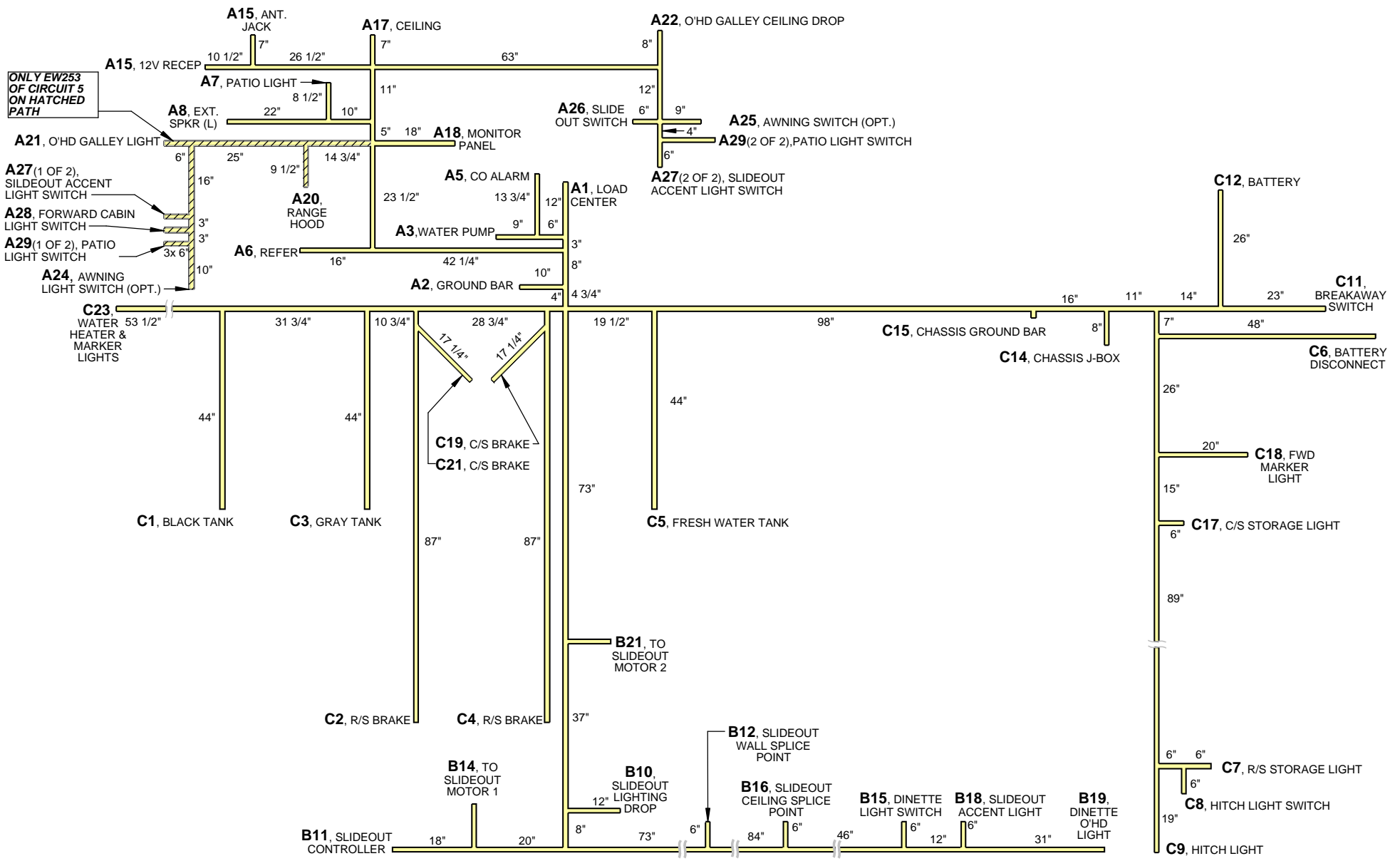
D

C

B

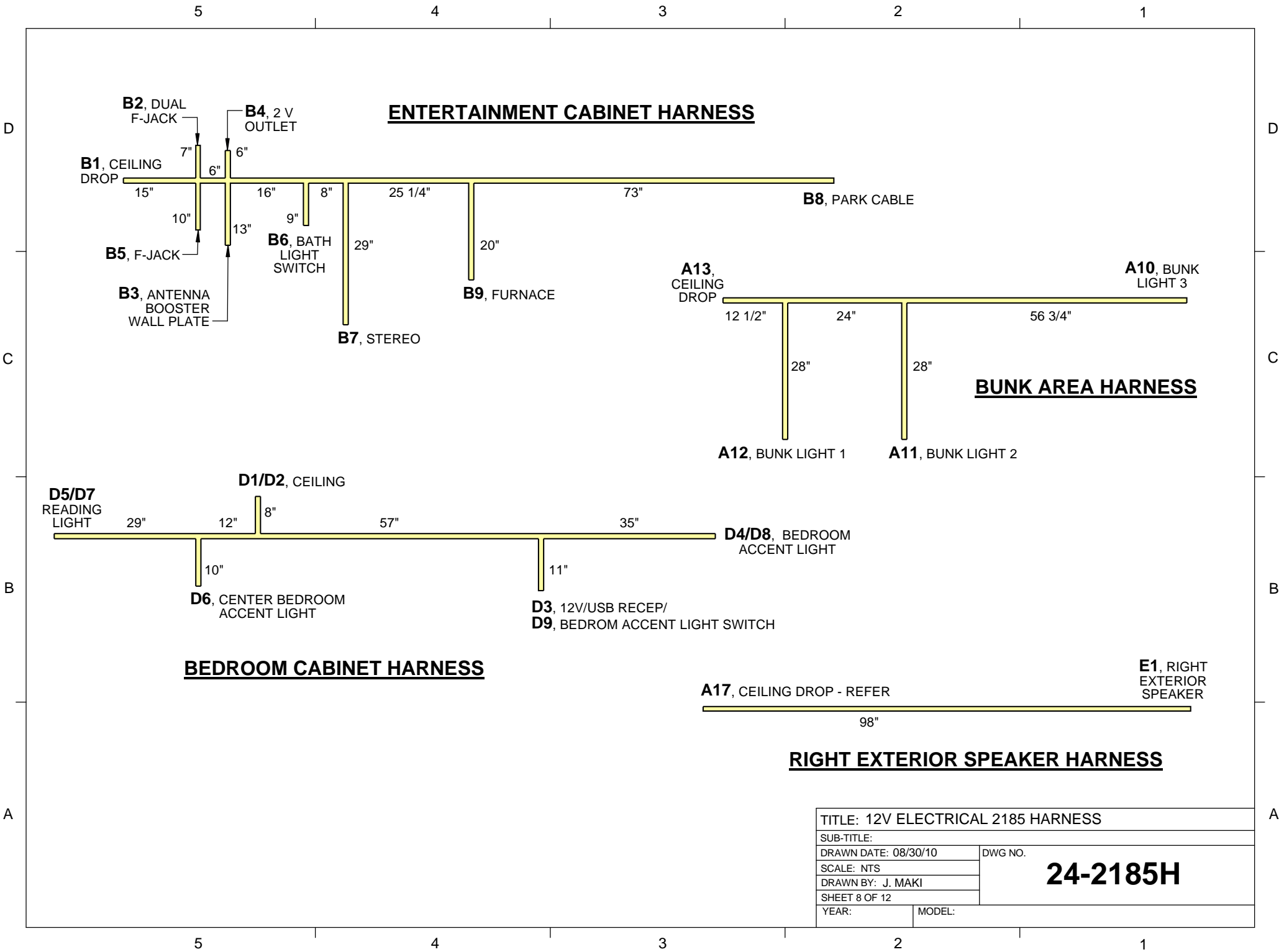
A

ONLY EW253
OF CIRCUIT 5
ON HATCHED
PATH



MAIN COACH HARNESS

| | | |
|------------------------------------|----------|--|
| TITLE: 12V ELECTRICAL 2185 HARNESS | | |
| SUB-TITLE: | | |
| DRAWN DATE: 08/30/10 | DWG NO. | |
| SCALE: NTS | 24-2185H | |
| DRAWN BY: J. MAKI | | |
| SHEET 7 OF 12 | | |
| YEAR: | MODEL: | |



| ELECTRICAL FROM - TO LIST - 2185 MAIN COACH HARNESS | | | | | | | | | | | |
|---|----------------|---------------------------------------|------|-------------|-------------------------------------|------------------------------------|----------|-------------------------|------------|-------------|--|
| CHG | ITEM NUMBER | TYPE | GAGE | COLOR | PATH | LENGTH | WIRE NUM | CIRCUIT NUM | PIN NUM | PLUG NUM | |
| | A1 | LOAD CENTER | | | | | | | | | |
| | EW101 | PRIMARY | 8 | WHITE | A1 - A2 | 3 | 1 | BAT | | | |
| | EW102 | PRIMARY | 8 | BLACK | A1 - C14 (40A AUX/BAT)- C6 - C12 | 28 | 1 | BAT | | | |
| | EW168 | PRIMARY | 14 | BLUE | A1 - A26 | 15 | 1 | 1 | | | |
| | EW184 | RIPCORDER | 16-2 | BLUE/WHT | A1/A2 - A5 | 3 | 1 | 9 | | | |
| | EW250 | RIPCORDER | 14-2 | BLACK/WHT | A1/A2 - A16 - A17 | 14 | 1 | 8 | | | |
| | EW251 | RIPCORDER | 14-2 | RED/WHT | A1/A2 - A17 | 8 | 1 | 7 | | | |
| | EW251 | RIPCORDER | 14-2 | RED/WHT | A1/A2 - A25 (ADD TAPE TO ENDS) | 16 | 1 | 11 | | | |
| | EW253 | RIPCORDER | 14-2 | BLUE/WHT | A1/A2- A20- A21- A27- A28- A29- A24 | 17 | 1 | 5 | | | |
| | EW253 | RIPCORDER | 14-2 | BLUE/WHT | A1/A2 - B10 | 13 | 2 | 5 | | | |
| | EW254 | RIPCORDER | 14-2 | BROWN/WHT | A1/A2 - A17 (ADD TAPE TO ENDS) | 8 | 1 | 2 | | | |
| | EW254 | RIPCORDER | 14-2 | BROWN/WHT | A1/A2 - A17 | 8 | 1 | 4 | | | |
| | EW251 | RIPCORDER | 14-2 | BROWN/WHT | A1/A2 - C17 - C7 - C8 - C9 | 31 | 2 | 4 | | | |
| | EW256 | RIPCORDER | 14-2 | GRAY/WHT | A1/A2 - A18 | 9 | 1 | 3 | | | |
| | EW256 | RIPCORDER | 14-2 | GRAY/WHT | A1/A2 - A17 (ADD TAPE TO ENDS) | 8 | 1 | 6 | | | |
| ➡ | EW261 | RIPCORDER | 10-2 | BLACK/WHT | A1/A2 - B22 - B11 | 16 | 1 | 10 | | | |
| | A2 | GROUND BAR | | | | | | | | | |
| | EW161 | PRIMARY | 14 | WHITE | A2 - A3 | 3 | 1 | 3 | | | |
| | A13 | CEILING DROP - WARDROBE CABINET | | | | | | | | | |
| | EW256 | RIPCORDER | 14-2 | GRAY/WHT | A13 - A12 - A11 - A10 | 19 | 2 | 6 | | | |
| | A17 | CEILING DROP - REFER CABINET, FORWARD | | | | | | | | | |
| | EW342-02 | SPEAKER RIP | 18-2 | GRN/GRN-BLK | A17 - A8 | 3 | 1 | | | | |
| | EW342-02 | SPEAKER RIP | 18-2 | GRN/GRN-BLK | A17 - E1 (IN SIDEWALL) | 6 | 2 | 8 | | | |
| | EW342-05 | SPEAKER RIP | 18-2 | BLU/BLU-BLK | A17 - A8 | 3 | 2 | 8 | | | |
| | A18 | MONITOR PANEL | | | | | | | | | |
| | EW166 | PRIMARY | 14 | RED | A18 - A3 | 9 | 1 | 3 | | | |
| | EW190 | PRIMARY | 18 | WHITE | A18 - C23 | 19 | 1 | 3 | | | |
| | EW194 | PRIMARY | 18 | BLUE | A18 - C23 | 19 | 1 | 3 | | | |
| | EW195 | PRIMARY | 18 | ORANGE | A18 - C23 | 19 | 1 | 3 | | | |
| | EW340 | SPEAKER RIP | 18-2 | CLEAR | A18 - C5 | 14 | 1 | 3 | | | |
| | EW342-01 | SPEAKER RIP | 18-2 | WHT/WHT-BLK | A18 - C1 | 18 | 1 | 3 | | | |
| | EW342-03 | SPEAKER RIP | 18-2 | GRY/GRY-BLK | A18 - C3 | 15 | 1 | 3 | | | |
| | | | | | | | | | | | |
| | | | | | | TITLE: 12V ELECTRICAL 2185 HARNESS | | | | | |
| | | | | | | SUB-TITLE: | | | | | |
| | | | | | | DRAWN DATE: 08/30/10 | | DWG NO. 24-2185H | | | |
| | | | | | | SCALE: NTS | | | | | |
| | | | | | | DRAWN BY: J. MAKI | | | | | |
| | | | | | | SHEET 9 OF 12 | | | | | |
| | | | | | | YEAR: | | MODEL: | | | |
| 5 4 3 2 1 | | | | | | | | | | | |

| | | | | | | | | | | |
|-----|---|--|------|-------------|------------------------------|--------|----------|-------------|---------|----------|
| | 5 | | 4 | | 3 | | 2 | | 1 | |
| | ELECTRICAL FROM - TO LIST - 2185, CONTINUED | | | | | | | | | |
| CHG | ITEM NO. | TYPE | GAGE | COLOR | PATH | LENGTH | WIRE NUM | CIRCUIT NUM | PIN NUM | PLUG NUM |
| | A29 | PATIO LIGHT SWITCH | | | | | | | | |
| | EW255 | RIPCORD | 14-2 | YELLOW/WHT | A29 - A7 | 9 | 1 | 5 | | |
| D | B1 | CEILING DROP - ENTERTAINMENT CABINET HARNESS | | | | | | | | |
| | EW184 | RIPCORD | 16-2 | BLUE/WHT | B1 - B9 | 7 | 1 | 2 | | |
| | EW256 | RIPCORD | 14-2 | GRAY/WHT | B1 - B6 | 4 | 1 | 6 | | |
| | EW250 | RIPCORD | 14-2 | BLACK/WHT | B1-B4-B3-B7 (BLUE TAPE ENDS) | 10 | 2 | 8 | | |
| | EW254 | RIPCORD | 14-2 | BROWN/WHT | B1 - B9 | 7 | 1 | 2 | | |
| | EW255 | RIPCORD | 14-2 | YELLOW/WHT | B1 - B6 | 4 | 1 | 6 | | |
| | EW342-01 | SPEAKER RIP | 18-2 | WHT/WHT-BLK | B1 - B7 | 6 | 1 | 8 | | |
| | EW342-02 | SPEAKER RIP | 18-2 | GRN/GRN-BLK | B1 - B7 | 6 | 3 | 8 | | |
| | EW342-03 | SPEAKER RIP | 18-2 | GRY/GRY-BLK | B1 - B7 | 6 | 1 | 8 | | |
| | EW324-04 | SPEAKER RIP | 18-2 | VT/VT-BLK | B1 - B7 | 6 | 1 | 8 | | |
| | EW342-05 | SPEAKER RIP | 18-2 | BLU/BLU-BLK | B1 - B7 | 6 | 1 | 8 | | |
| C | EW342-06 | SPEAKER RIP | 18-2 | ORG/ORG-BLK | B1 - B7 | 6 | 1 | 8 | | |
| | EW380WHT | ANT. CABLE | COAX | WHITE | B1 - B3 | 3 | 1 | 8 | | |
| | B5 | DUAL F-JACK (TO/FROM SATELLITE CONTROL BOX) | | | | | | | | |
| | EW380GRY | ANT. CABLE | COAX | GRAY | B5 - SPLITTER - B2 | 1+1 | 1 | 8 | | |
| | EW380GRY | ANT. CABLE | COAX | GRAY | (B5) SPLITTER - B1 | 2 | 2 | 8 | | |
| | B7 | STEREO | | | | | | | | |
| | ET126 | AUDIO/VIDEO | RCA | BLACK | B7- TV LOCATION | 6 | 1 | 8 | | |
| | B8 | PARK CABLE | | | | | | | | |
| | EW380GRY | ANT. CABLE | COAX | GRAY | B8 - B2 | 12 | 3 | 8 | | |
| | EW380WHT | ANT. CABLE | COAX | WHITE | B8 - B3 | 12 | 2 | 8 | | |
| B | B10 | SLIDEOUT LIGHTING DROP | | | | | | | | |
| | EW253 | RIPCORD | 14-2 | BLUE/WHT | B10 - B12 | 9 | 3 | 5 | | |
| | EW167 | PRIMARY | 14 | YELLOW | B10 - B12 | 9 | 1 | 5 | | |
| | EW167 | PRIMARY | 14 | YELLOW | B10 - A27 | 26 | 2 | 5 | | |
| | B11 | SLIDEOUT CONTROLLER | | | | | | | | |
| | EW184 | RIPCORD | 16-2 | BLUE/WHT | B11 - A26 | 28 | 4 | 10 | | |
| | HS112HA | PNP CABLE | N/A | BLACK | B11 - B14 | (20) | 1 | 10 | | |
| | HS112HA | PNP CABLE | N/A | BLACK | B11 - B21 | (20) | 2 | 10 | | |
| A | <div> <div>TITLE: 12V ELECTRICAL 2185 HARNESS</div> <div> <div>SUB-TITLE:</div> <div> <div>DRAWN DATE: 08/30/10</div> <div>DWG NO.</div> </div> <div>SCALE: NTS</div> <div>DRAWN BY: J. MAKI</div> <div>SHEET 10 OF 12</div> <div>YEAR:</div> <div>MODEL:</div> </div> <div>24-2185H</div> </div> | | | | | | | | | |
| | 5 | | 4 | | 3 | | 2 | | 1 | |

5

4

3

2

1

ELECTRICAL FROM - TO LIST - 2185, CONTINUED

| CHG | ITEM NO. | TYPE | GAGE | COLOR | PATH | LENGTH | WIRE NUM | CIRCUIT NUM | PIN NUM | PLUG NUM |
|-----|------------|--|------|------------|---|--------|----------|-------------|---------|----------|
| D | B16 | SLIDEOUT CEILING SPLICE POINT | | | | | | | | |
| | EW167 | PRIMARY | 14 | YELLOW | B16 - B12 (IN SLIDEOUTWALL) | 8 | 3 | 5 | | |
| | EW253 | RIPCORDER | 14-2 | BLUE/WHT | B16 - B12 (IN SLIDEOUT WALL) | 8 | 5 | 5 | | |
| | EW253 | RIPCORDER | 14-2 | BLUE/WHT | B16 - B15 - B19 (IN SLIDEOUT CEILING) | 9 | 6 | 5 | | |
| | EW255 | RIPCORDER | 14-2 | YELLOW/WHT | B16 - B18 (IN SLIDEOUT CEILING) | 6 | 2 | 5 | | |
| C | C14 | CHASSIS JUNCTION BOX & BREAKERS | | | | | | | | |
| | EP102 | 7 WIRE CABLE | N/A | BLACK | C14 - CHASSIS (BTW BATT & PROPANE) | N/A | 1 | BAT | | |
| | EW120 | PRIMARY | 10 | WHITE | C14 (JBOX) - C15 | 2 | 1 | BAT | | |
| | EW121 | PRIMARY | 10 | BLACK | C14 (JBOX) - C14 (30A BRKR BAT) | 1 | 1 | BAT | | |
| | EW102 | PRIMARY | 8 | BLACK | C14 (30A BRKR AUX) - C14 (40A BRKR BAT) | 1 | 2 | BAT | | |
| | EW160 | PRIMARY | 14 | BLACK | C14 - C6 (BREAKAWAY SWITCH) | 4 | 1 | BAT | | |
| | EW252 | RIPCORDER | 14-2 | GREEN/WHT | C14 - C18 | 6 | 1 | BAT | | |
| | EW361 | BRAKE JACKET | 12-2 | BLACK | C14 - (C19-C4-C21-C2) SPLICED | 30 | 1 | BAT | | |
| | EW362 | STP/TRN/TL R | 16-4 | Y-R-G-BR | C14 - C23 | 22 | 1 | BAT | | |
| | C15 | CHASSIS GROUND BAR | | | | | | | | |
| B | EW101 | PRIMARY | 8 | WHITE | C15 - A2 | 11 | 2 | BAT | | |
| | EW101 | PRIMARY | 8 | WHITE | C15 - C12 | 6 | 3 | BAT | | |
| | C22 | CHASSIS GROUND LUG | | | | | | | | |
| | EW161 | PRIMARY | 14 | WHITE | C22 - C23 | 3 | 2 | BAT | | |
| | EW191 | PRIMARY | 18 | GREEN | C22 - C23 | 3 | 1 | 3 | | |
| | D2 | ROADSIDE BEDSIDE CABINET DROP | | | | | | | | |
| | EW167 | PRIMARY | 14 | YELLOW | D2 - D4 | 9 | 3 | 4 | | |
| | D5 | ROADSIDE READING LIGHT | | | | | | | | |
| | EW161 | PRIMARY | 14 | WHITE | D5 - D2 - D3 - D4 | 15 | 4 | 4 | | |
| | EW169 | PRIMARY | 14 | BROWN | D5 - D2 - D3 | 11 | 4 | 4 | | |
| A | D8 | CURBSIDE BEDROOM ACCENT LIGHT | | | | | | | | |
| | EW161 | PRIMARY | 14 | WHITE | D8 - D1 - D6 -D7 | 15 | 4 | 4 | | |
| | EW167 | PRIMARY | 14 | YELLOW | D8 - D9 - D1 - D6 | 13 | 4 | 4 | | |
| | D9 | BEDROOM ACCENT LIGHT SWITCH | | | | | | | | |
| | EW169 | PRIMARY | 14 | BROWN | D9 - D1 - D7 | 11 | 4 | 4 | | |

TITLE: 12V ELECTRICAL 2185 HARNESS

SUB-TITLE:

DRAWN DATE: 08/30/10

DWG NO.

SCALE: NTS

DRAWN BY: J. MAKI

SHEET 11 OF 12

YEAR:

MODEL:

24-2185H

5

4

3

2

1

